

WIND SPEED MONITOR & CONTROL - SURFACE MOUNT



- ◆ UL LISTED E235769
- ◆ UNIVERSAL 100/240 Vac POWER
- ◆ TWO INDEPENDENT CONTROLS WITH ADJUSTABLE TIMERS
- ◆ UP TO 3 ANEMOMETERS
- ◆ ANEMOMETERS CIRCUIT TROUBLESHOOTING LED'S
- ◆ 3 DIGIT RED LED DISPLAY
- ◆ LOW PROFILE TYPE 1 & 3R ENCLOSURE
- ◆ CUSTOMIZED VERSIONS AVAILABLE
- ◆ OEM MODELS AVAILABLE

APPLICATIONS

- ◆ ARCHITECTURAL FOUNTAINS
- ◆ FLOATING FOUNTAINS
- ◆ GRAIN STACKS
- ◆ CONSTRUCTION ALARMS
- ◆ AGRICULTURAL ALARMS
- ◆ WEATHER ALARMS
- ◆ RECREATIONAL ALARMS

The Demico Inc. Wind Monitor and Control implements control or alarm operations based on wind speed. Typical applications include architectural fountains, where the height of the fountain is reduced for a programmable time when the wind begins to blow the water out of the pool, and turned off entirely when the wind begins to blow the reduced height spray out of the pool. Agricultural applications include providing alarms for protecting agricultural

harvests and livestock from dispersing or being damaged from the effects of high wind. Construction applications include site alarms for crane operators and workers or materials exposed to gusts. Recreational applications include monitoring climbing areas, ultralight and hang gliding areas, and any other areas where strong winds may be hazardous to participants.

The Operation of the Wind Monitor and Control is simple. One to three anemometers sense the wind speed. The control's microcomputer compares the highest wind speed with the two setpoints on the front panel. When the highest wind speed exceeds a setpoint, then the output relay for that setpoint is activated for a minimum time set by the user on the front panel. These adjustments are simple dial

P.O. Box 90756
Atlanta GA 30364--0756
www.demico.com
sales@demico.com



Since 1978
Page 1

Telephone (800) 735 0416
Fax (800) 735 0423

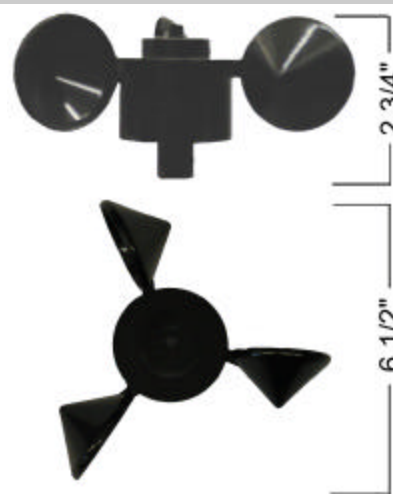
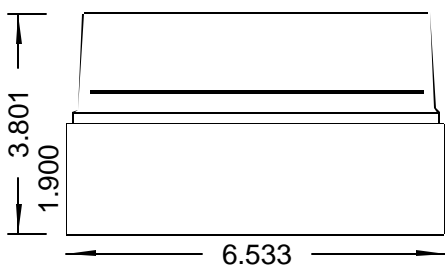
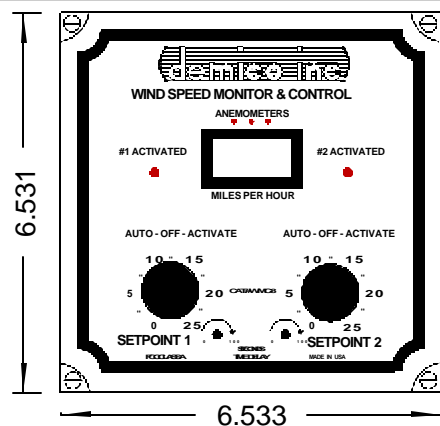
and set inputs. Turn the knobs to the desired values and switch the output switch to "AUTO". The WSM is ready to go. Dry Form C contacts are provided for maximum versatility. Most loads can be controlled directly with the 250 Vac @ 10A rated outputs. Manually activate or deactivate the outputs using the three position AUTO-OFF-ACTIVATE toggle switches.

The control is UL listed for safety assurance and hassle free electrical inspections. The TYPE 1 & 3R rating of the enclosure assures trouble free operation in most environments.

Up to three externally mounted wind speed sensors (anemometers) may be installed near the areas of interest. The anemometers use ruby bearings to detect slight breezes, but withstand 120 mph winds. The small form factor anemometer provides greater freedom in choosing a mounting location and is less obtrusive to the aesthetics of a project. Appropriate lightning protection may be required for each anemometer – see installation instructions. The WSM control is usually mounted locally near the controlled load, or convenient to the end user.

Specifications

Enclosure	polycarbonate Type 1&3R
Anemometer	polycarbonate
wind speed	1-120 mph +/- 1 mph
Resolution	1/10 mile per hour.
Display	3 digit red LED .4" high.
Power	120/240 Vac 50/60Hz 0.2 amps max.
Anemometer Circuit	Class 2
Output Contacts	10 Amps @ 240 Vac 1/2 HP @ 240 Vac 8A @ 24 Vdc.
Setpoint range	0-25 mph standard other ranges available.
Operating Temp.	-30 to 40 C (-20 to 104F).
Tested Isolation	1500 Vac between power input and anemometer circuit, 1500 Vac between power circuit and output circuits 1500 Vac between anemometer circuit and output circuit
Terminals	6-32 with wire clamps 12 - 22 ga wire size
Warranty	1 year Parts and Labor
UL Listing	File E235769



ORDERING INFORMATION

Catalog Number for control	WMC-SM
Catalog Number for extra Anemometers (one comes with Control)	AN-1